

Ashtabula County Children Services Board 2015 – Year in Review

Case Statistics

- ACCSB received 2,533 reports of suspected child abuse and neglect

- An average of 70 new cases per month were “screened-in” for services

- The average number of Ongoing family cases per month was 105

- The average number of children in out-of-home care was 146

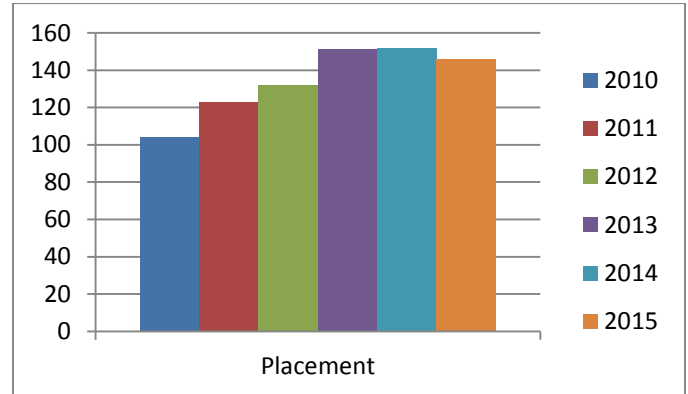
- The average length of stay in out-of-home care is 9 months

- The total cost of out-of-home care for abused and neglected children was \$3,022,450

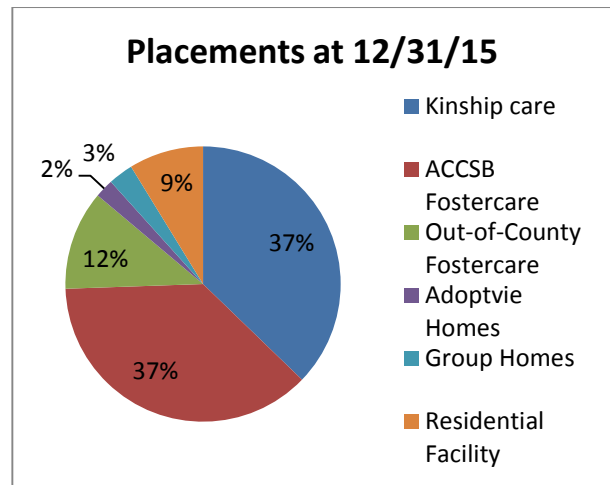
- 28 adoptions were finalized

- Total number of agency licensed foster homes is 34

There has been a 40% increase in the number of children in care per month since 2010



Children are placed in care settings based on their individual needs. Placement costs range from \$22.85 per day to \$260 per day depending on placement type.



Ashtabula County Children Services
For the year ended December 31, 2015

Receipts			
Local Levies		4,084,397.75	54%
Federal Reimb		2,374,337.78	31%
State Reimb		644,572.67	9%
Support for the Care of children		86,996.24	1%
Direct Service Grant Proceeds		329,175.09	4%
Summer Foods Program	75,902.31		
Help Me Grow	253,272.78		
Refunds & Reimbursements		29,050.16	0%
 Total 2015 Receipts		 7,548,529.69	

Expenditures			
<u>Caseworker Services</u>		2,441,155.76	34%
Intake, Assessments & Investigation	456,346.45		
Alternative Response	519,679.11		
Ongoing cases	616,148.13		
Resources and Permanency Planning	417,195.36		
Family support team	252,230.75		
After Hours Emergency Team	90,815.95		
Family Meetings	88,740.00		
<u>Services for children in Placement</u>		3,714,607.62	52%
Foster Care and Adoptive Placement	1,572,658.47		
Adoption Subsidies	179,570.61		
Paid Placements	1,548,234.19		
Transportation Services	228,256.88		
Independent Living Initiatives	109,898.67		
Foster child daycare	75,988.80		
<u>Other Direct Service Programs</u>		408,031.20	6%
Summer Foods Program	94,620.24		
Help Me Grow	255,135.96		
KPIP	58,275.00		
<u>Other Cost Categories</u>		537,466.17	8%
Maintenance & Custodians	122,807.27		
HR and Admin	208,055.93		
Fiscal and Support	191,889.20		
Staff Training & Education	11,757.22		
Community Education	2,956.55		
 Total 2015 Expenditures		 7,101,260.75	

Ashtabula County Children Services
For the year ended December 31, 2015

Receipts			
Local Levies		4,084,397.75	54%
Federal Reimb		2,374,337.78	31%
State Reimb		644,572.67	9%
Support for the Care of children		86,996.24	1%
Direct Service Grant Proceeds		329,175.09	4%
Summer Foods Program	75,902.31		
Help Me Grow	253,272.78		
Refunds & Reimbursements		29,050.16	0%
Total 2015 Receipts		7,548,529.69	

Expenditures			
<u>Caseworker Services</u>		2,441,155.76	34%
Intake, Assessments & Investigation	456,346.45		
Alternative Response	519,679.11		
Ongoing cases	616,148.13		
Resources and Permanency Planning	417,195.36		
Family support team	252,230.75		
After Hours Emergency Team	90,815.95		
Family Meetings	88,740.00		
<u>Services for children in Placement</u>		3,714,607.62	52%
Foster Care and Adoptive Placement	1,572,658.47		
Adoption Subsidies	179,570.61		
Paid Placements	1,548,234.19		
Transportation Services	228,256.88		
Independent Living Initiatives	109,898.67		
Foster child daycare	75,988.80		
<u>Other Direct Service Programs</u>		408,031.20	6%
Summer Foods Program	94,620.24		
Help Me Grow	255,135.96		
KPIP	58,275.00		
<u>Other Cost Categories</u>		537,466.17	8%
Maintenance & Custodians	122,807.27		
HR and Admin	208,055.93		
Fiscal and Support	191,889.20		
Staff Training & Education	11,757.22		
Community Education	2,956.55		
Total 2015 Expenditures		7,101,260.75	